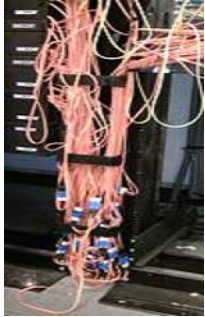




In This Issue: ➤ Cabling ➤ Traffic ➤ Security ➤ Training

VISIT US AT wbeinc.com



Network Cable Management Services

Do unauthorized people enter your network rooms and patch into your network? Are the patch cables a mess? Are you having problems managing available ports in both your patch panels/fields and network switches for data and VOIP?

It takes three times more time to trace cables and make changes when patch cables are in disarray from years of neglect. Imagine your IT staff or your contractor taking three times longer to do their work or the **potential of network downtime** which directly effects productivity and revenue.

At right, a disorganized patch panel takes longer to work on, while an organized panel done right reduces network downtime by making work more efficient.



BEFORE



AFTER



Is your Company protected properly?

Today's security systems require developing a comprehensive security plan that involves methodical and deliberate analysis. One of the most important factors to look into is what security level is needed for your company. In the security industry there are three tiers of security.

Tier 1 is a simple access control with a card credential to gain access.

Tier 2 is something you have (card credential) and something you know (personal identification number).

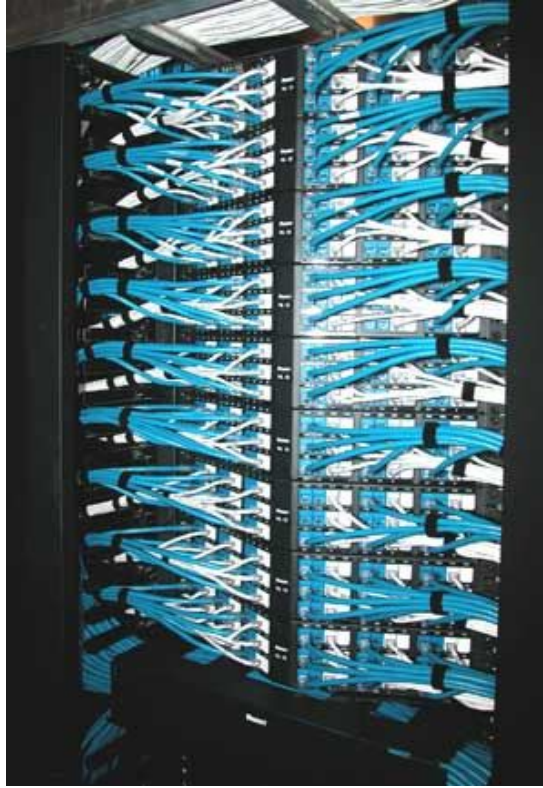
Tier 3 is the card credential, PIN, and something you

Like many of our corporate clients you might want to take advantage of the Network Cable Management Services WBE Telcom offers. We provide the following services in any combination.

- Patch cable management and documentation
- Switch port management and documentation
- Change control and Critical Environment Work Authorization (CEWA) scripting
- Security, card access, cameras, cages, siphire locks
- Clean up and organization of Patch Panel fields
- Cable organizers
- Move, add, & change support
- Monthly and quarterly reporting
- Web based tracking system for work orders

All of this simply because there is never enough time to do it right the first time, but there is always enough time to do it over again.

If you would like more info on these services please contact **Kevin Bradley** at kbradley@wbein.com



solely own, usually your thumbprint. Sometimes your hand geometry units are used, but they have a higher false positive failure rate.

Iris recognition is also available, but extremely expensive and people are apprehensive to look into something to have their eyes scanned. The thumbprint is just as suitable and incorporates something that is unique and much easier managed. Usually, the thumbprint is simply "burned" to an available readable chip on the access card so you can carry all your credentials with you and the access system doesn't really have to see your thumbprint. The authentication takes place at the reader level where it essentially checks your thumb to the template on the card. So how well is your business protected? If you would like more information on security control systems please contact **Michael Nann** at mnann@wbeinc.com or (415) 898-1400 ext. 268

Don't let Off-Site Improvements Delay Tenant Occupancy or Your Grand Opening!

Many General Contractors and Developers are caught by surprise when public entities require improvements in infrastructure at the expense of the owner/developer or they are so focused on the project that off-site work is left for the very end of the project, such as:

1. Site Lighting (Landscape & Parking Lot)
2. Power to Irrigation
3. Off-Site Lighting
4. Traffic Signals
5. Traffic Signal Interconnect Systems

Many of these items have long lead times and can delay occupancy of the project or a published grand opening. Let WBE Traffic Signal and Street Lighting take on the challenge and take away these headaches. For questions, quotes or service please contact **Brian Finley** at bfinley@wbeinc.com or (415) 898-1400

Visit <http://www.wbeinc.com/traffic.php> for pictures and information about more recent projects.



Training



Jason Fredlund becomes a BICSI Certified Trainer

Congratulations to WBE'S Jason Fredlund! He just passed the BICSI Certified Training Course. It was an 8 day course in which he had to pass a written test and conduct 5 presentations. Now Jason will be able to train others here at WBE!

Stay in Touch:
FIND US ON **facebook**
FOLLOW US ON **twitter**
Tel: 415.898.1400
Fax: 415.898.5991

WBE Ink is published by W. Bradley Electrical for its customers, employees and friends. Please send your comments, questions or submissions to Liz Hartmann (lhartmann@wbeinc.com). Copyright 2010. All rights reserved. Produced by Ruddle Creative Inc. (www.ruddle.com).